

PROJECT

SPOTLIGHT

American Structurepoint's architecture and engineering experts see around corners and find hidden opportunities when leading projects, which leads to better outcomes for our clients. Our talented team of experts are known for providing innovative solutions, including the **16 Tech Innovation District in Indianapolis.**

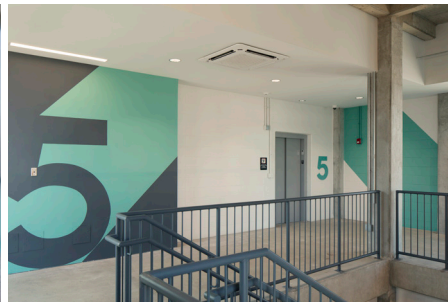
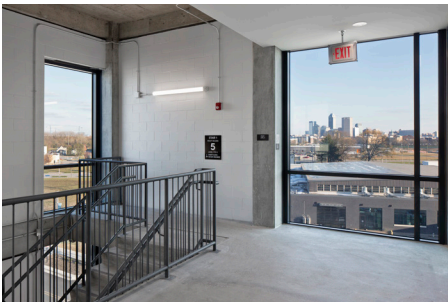
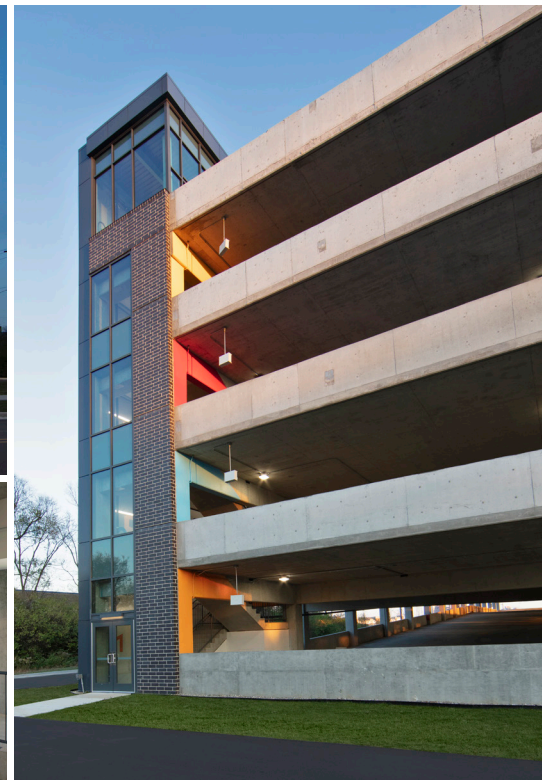
Comprising 50 acres on the northwest side of Indianapolis, 16 Tech is being developed to attract innovation driven enterprises of all types with a focus on life sciences, advanced manufacturing and technology. The master plan for 16 Tech included limited surface parking, and proposed structured parking in later phases. Our team of experts turned the surface parking into a dynamic parking structure early in the overall project, allowing more space in the district to be used for innovative development.

Our architects envisioned an eye-catching design with an exterior tower highlighting vibrant colors and additional

lighting to make the facility aesthetically pleasing, safer, and more secure. The structure was also designed to be expanded when additional parking is needed in the future. Despite its smaller footprint, the structure has space for 700 vehicles and EV charging stations on each level, and it can be expanded to accommodate 1,000 vehicles.

The parking garage is located on Breedlove Lane at the 16 Tech development. The street's name was chosen through community input and pays homage to Madame CJ Walker by celebrating her maiden name – Breedlove.

American Structurepoint is committed to improving the quality of life for the communities and people we serve. This new parking structure will help create the live, work, play, environment our client envisioned and help fuel economic growth for the city and state.



AMERICAN STRUCTUREPOINT IS A FULL-SERVICE ARCHITECTURE AND ENGINEERING FIRM.



AMERICAN
STRUCTUREPOINT
INC.

www.structurepoint.com

